



# HOUSE & LAND

# \$523,027\*

ALLANVALE ESTATE – CRANBOURNE EAST

Lot 224 Doriemus Street  
Cranbourne East VIC 3977

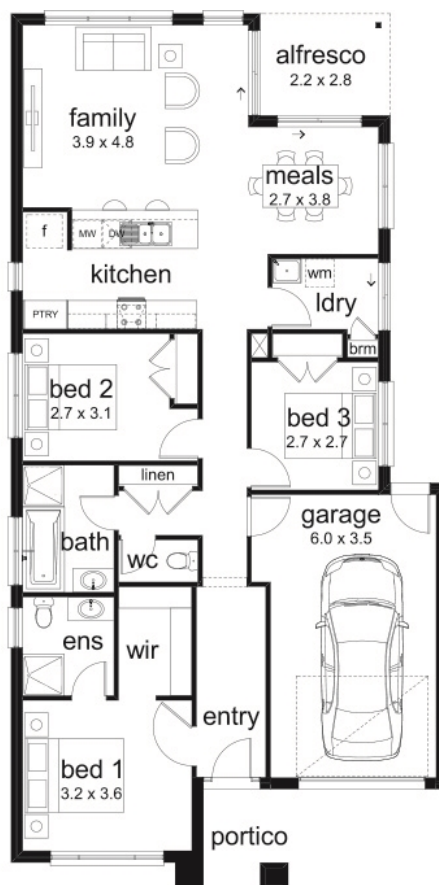
🚗 3 🏠 2 🚗 1 🚗 1 🏠 1

**Crystal 16 Livia Facade**

(Aspirations)

Home size: 16.19sq Land size: 336m<sup>2</sup>

- ✓ Aspirations Inclusions
- ✓ BAL
- ✓ Site Costs Allowance
- ✓ NBN Connection
- ✓ Sectional Garage Door
- ✓ Ducted Heating
- ✓ Floor Coverings
- ✓ 35 m<sup>2</sup> of Concrete Drive and Paving
- ✓ Current Promotion



**ALLANVALE**

Go to [dennisfamily.com.au](http://dennisfamily.com.au) or call  
**1800 DENNIS** for more information.

Sid Sethi 0408 972 201  
Reference HL0025984